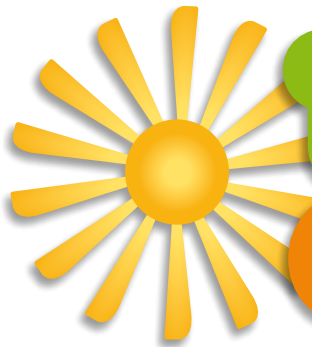


'Tis the season to reduce and recycle



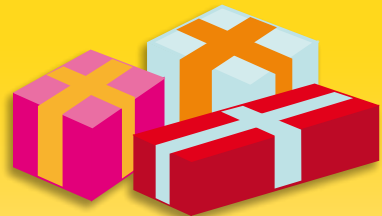
# The 12 Do's of Christmas

1



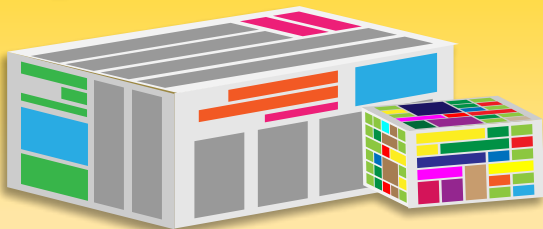
Buy good quality **decorations that can be reused** many times, or make your own from reused materials.

2



Find **gifts with a lower environmental impact** e.g. items with minimal packaging, that are durable and you know they want, or give experiences like shows or spending time together.

3



Use **paper wrapping** and reuse or recycle it afterwards. For extra points, choose recycled content paper.

4



Plan ahead to **prevent food wastage**. For tips on serving sizes, the best way to store food, and recipes that use leftovers, visit [LoveFoodHateWaste.nsw.gov.au](http://LoveFoodHateWaste.nsw.gov.au)

5

**Compost or worm farm** your unavoidable food scraps. Most fruits and vegetables and their peels are perfect for composting – and they make a great natural fertiliser the garden will love!

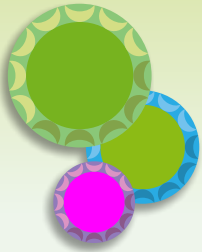


6



Much of your **food and drink packaging is recyclable**, including glass bottles and jars, aluminium cans, foil trays, cardboard packaging, and custard cartons. Check what's recyclable in your area at [RecyclingNearYou.com.au](http://RecyclingNearYou.com.au)

7



**Steel bottle caps can be recycled** with just a little effort. Collect them in an empty steel can until the can is about half-full, then squeeze the top closed and put the can in the recycling bin. This will stop the tiny lids from falling through sorting machines, and keep valuable steel out of landfill.

8

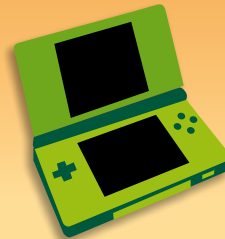
Some items take up a lot of room in your recycling bin. **Flatten aluminium cans, milk and juice cartons, and cardboard boxes to save space.** If you've still got too many recyclables to fit in your recycling bin, don't despair! Store the excess until your next scheduled collection, drop them off at a local recycling facility, or call your council to find out if they offer additional collection services at this time of year.

9



If you're giving a battery operated gift **give a battery recharger** too. They have less environmental impact and save money. For info on battery recycling visit [RecyclingNearYou.com.au](http://RecyclingNearYou.com.au)

10



If you're giving or receiving electronic gifts this festive season (e.g. TVs, mobile phones, printers and printer cartridges, or computers), find out how to **recycle your old and unwanted electronics** on [RecyclingNearYou.com.au](http://RecyclingNearYou.com.au)

11



You can reduce your impact when travelling between events or going on holidays. Where possible **walk, ride a bike, use public transport or car pool.** For long trips make sure your tyres are pumped up and your engine tuned. To find recycling options for used car oil, tyres and batteries visit [RecyclingNearYou.com.au](http://RecyclingNearYou.com.au).

12



If you choose a **live Christmas tree** this year, ask your council if they have a special Christmas tree collection in the new year, a mulching service, or whether you can take the tree to your local recycling facility when you've finished with it.

## The 12 Do's of Christmas

To find recycling options in your area, your council's contact details, or further information about recycling this festive season, visit [RecyclingNearYou.com.au](http://RecyclingNearYou.com.au) or call the **National Recycling Hotline** on **1300 733 712**.